



Vijverpomp – Pompe de bassin

Teichpumpe – Pond pump

VarioFlow



**Gebruiksaanwijzing – Instructions d'utilisation
Bedienungsanleitung – Operation instructions**

Bewegen – Mobilité – Bewegen - Moving

www.auga.nl

Wij danken u voor de aankoop van dit product en wensen u veel waterplezier.






Nous vous remercions d'avoir acheté ce produit et vous souhaitons beaucoup de plaisirs aquatiques.

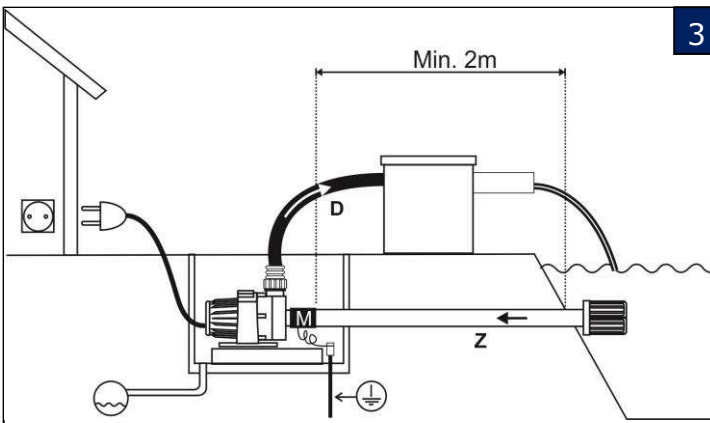
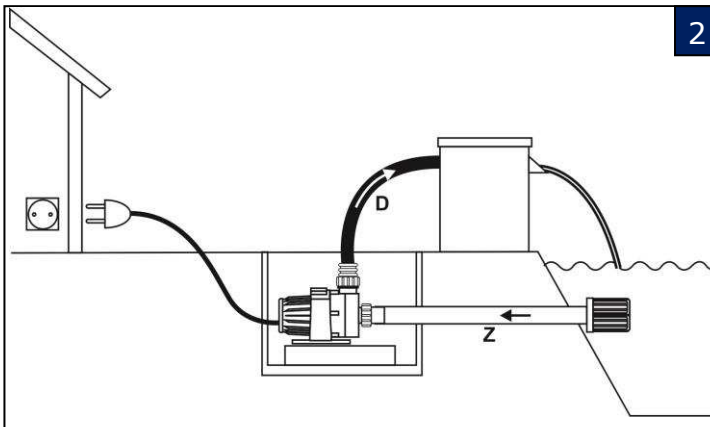
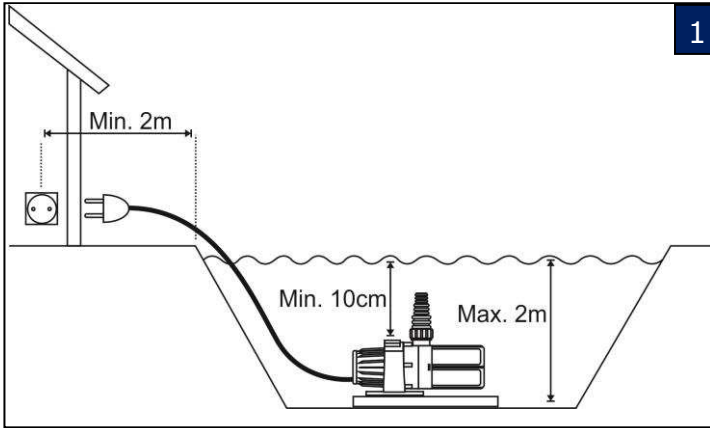
Vielen Dank für den Kauf des Produktes wir wünschen Ihnen viel Spaß damit.

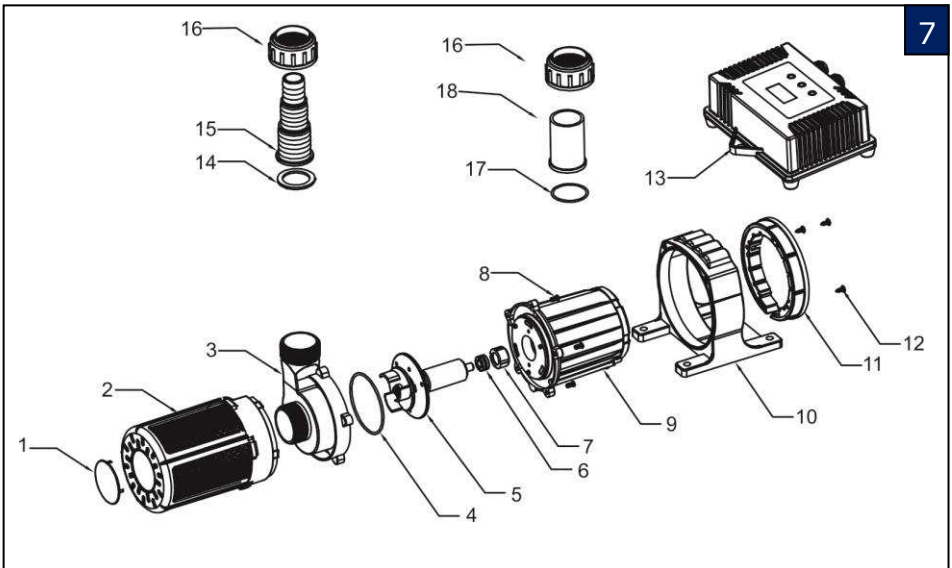
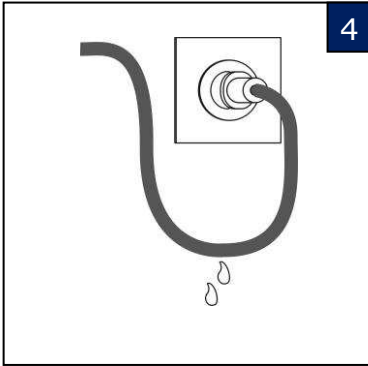
Thank you for purchasing this product and wish you lots of water fun.

Inhoudsopgave – Table des matières – Inhaltsverzeichnis - Index

Specificaties – Spécifications – Technische Daten – Specifications	3
Afbeeldingen – figure – Bilder – Pictures	4
Gebbruiksaanwijzing (NL)	6
Instructions d'utilisation (F)	12
Bedienungsanleitung (D)	19
Operation instructions (GB)	26
Garantiecertificaat – Certificat de garantie – Garantie-Zertifikat Guarantee certificate	32

VarioFlow®	Volt/Hz	P1 Watt	H.max m	Q l/h	 in m	 Ø mm	 in inch	 Ø mm	 Ø mm	Art.nr.
5	230 / 50	5-35	3,5	0-5000	10-1,5	8	1½"	25-32-40	40	102105
10	230 / 50	5-80	4,5	0-10000	10-1,5	8	1½"	25-32-40	40	102110
20	230 / 50	5-195	5,5	0-20000	10-1,5	8	2"	32-40-50	50	102120
30	230 / 50	5-440	6,0	0-30000	10-1,5	8	2"	32-40-50	50	102130







WARNING!

This pump is fitted with a permanent magnet.

The magnetic field can disrupt pacemakers, interfere with electric/electronic components and erase data from data carriers.

Persons fitted with pacemakers must keep a safe distance of at least 1m from the pump.



Persons who have not read and understood the operating instructions should not use the pump!

This device is not intended for use by persons or children with impaired physical, sensory or intellectual impairments, or if lacking in experience and/or know-how, unless they are under supervision or have been trained in the use of the device by a person responsible for their safety.

Children should be supervised to ensure that they do not play with the device.

Design:

- Efficient, multifunctional pump with a 6-pole, 3-phase, brush-free permanent magnetic motor with high efficiency and long lifespan.
- Pump axle and bearings made of top quality ceramics for resistance to wear-and-tear.
- Built-in single chip micro-computer with various safeguards to prevent problems such as:
running dry, overheating, overuse, etc.
- Motor made of poured synthetic resin (IP 68)
- External operating panel with buttons and digital display, suitable for step-free alteration of capacity and power usage.

Uses:

VarioFlow pumps are suitable for transporting fresh water / seawater, without chemical additives, for circulation filter systems, ornamental waterways, waterfalls and fountains.

- Before carrying out any work to the pump and/or pond or other system to which the pump is connected, remove the pump plug from the electrical socket and other connected devices.
- Do not use the pump when there are people in the water! (Isolate the pump from the mains network).



Uses: garden ponds, fish ponds, fountains, patio fountains (see figures 1+2)



- **Caution:** May only be used in garden ponds and the corresponding protection zone if the installation fulfils the prevailing guidelines. In the event of any doubts, please consult an electrician.
- **For technical information on the pump, see the nameplate or the table on page 2.**
- Before carrying out any work to the pump and/or pond or other system to which the pump is connected, remove the pump plug from the electrical socket and other connected devices.

- Do not use the pump when there are people in the water! (Isolate the pump from the mains network).
- **Observe the safety instructions.**



Uses: Swimming lake or swimming pool (if people use the water!) (see image 3)



Caution:

This pump may only be used out of the water; it must be installed a minimum of 2 metres from the pool, according to the instructions!

- The pump is suitable for use in installations and spaces in line with DIN VDE 0100 parts 702 and 737, if the set-up guidelines DIN VDE 0100 and the manufacturer's instructions (for assembly and operations) have been followed.
- If you are to install these pumps in swimming lakes/pools, you must adhere to the following norms: DIN EN 13451 part 1 to part 8 and DIN VDE 0100 part 702 and part 737.

The following instructions must be followed: (see figure 3)

- Create a shaft and a platform for the pump, a min. of 2 cm from the water's edge.
- Protect the shaft with a cover.
- In order to protect the pump from flooding, you must create a run-off in the shaft so that excess water can drain into the garden, sewers, etc. If this is not possible, a submersible pump with a float must be used in order to provide a flooding safeguard.
- Secure the pump to the platform with screws.
- In the suction pipes to the pump, install a metal "M" coupling sleeve in the connection in the equipotential connector from the lake/swimming pool installation!
- In the event of any doubts, please consult an electrician.
- See also "dry installation".

Observe the safety instructions.



Safety instructions

- **Warning!** This pump may only be used if the electrical system meets relevant statutory requirements.
If in doubt, consult a qualified installer.
- **The pump may only be connected to a system with a ground-fault circuit interrupter (30mA) and earthed power outlet.**
- The mains voltage and current type must match the information on the nameplate or table on page 2.
- Place the power outlet in a moisture-free area, at least 2m from the water's edge (see image 1.)
- Check the power cord, plug and VarioFlow Control panel for damage before using the pump.
- Important: if damaged, do not use the mains cable, engine housing or operating panel.

- Repair is not possible since the cable is moulded into the motor and is therefore not replaceable.
- Do not move or suspend the pump by the power cord.
- Keep the plug dry. To prevent water from running from the cord to the plug, suspend the cord in a U-shape. (see figure 4.)
- When working on the pump, always unplug from the electrical outlet to cut off the power supply.
- The pump may only be used if it has an adequate supply of water.
- The pump may only be used for pumping fresh water / seawater, without any chemical additives or other aggressive components, with a maximum temperature of 35°C.



Commissioning the pump when installing in water (figures 1 and 6).

Important: Do not run the pump dry as this may damage the pump.

- Place the pump in the water to fill it up.
- To avoid unnecessary contamination, place the pump on solid stone tiles to prevent it from standing in and ingesting sludge.
- Make sure that the water is at least 10cm deep to prevent the pump from sucking air.
- Maximum immersion depth of the pump is 2 m under water.
- Place the pump housing in the appropriate position and assemble the accessories on the cable connection to the pump.
- Start the pump by inserting the plug into the socket and using the VarioFlow control panel (see Operating pump) to turn it on
- Care should be taken to protect the pump from frost and freezing.



Commissioning the pump in dry installation conditions:

(figures 2, 3 and 6)

The pump can also be installed out of the water.

- Remove the pump suction basket.
- Place the pump underwater next to the pond so that water can flow into the pump (the pump will not suck in water of its own accord).
- Put the pump housing in the right position and connect a suction hose/pipe (Z) and pressure hose/pipe (D) to the pump and ensure they are air and watertight.
- In order to use the pump, the suction hose/pipe (Z) must have been filled with water.
- Start the pump by inserting the plug into the socket and using the VarioFlow control panel (see Operating pump) to turn it on
- **Tip:** to protect the pump against contamination, the suction side must be fitted with a pre-filter.
- Care should be taken to protect the pump from frost and freezing.



Operating pump (figure 5):

The pump is controlled using the VarioFlow control panel.

- a. Display for:
 - Reading off steps 0-100, the revolutions are increased by pressing on (c) and reduced by pressing button (d)
 - Reading off power usage after setting revolutions (visible a few seconds after setting)
- b. Button for switching pump on and off.

- c. Button for increasing capacity.
 - d. Button for reducing capacity.
- The pump will revert to the last setting if it is turned off and then on again.

Attention: Don't push with quick-frequency on the buttons, it results in error-data on digital display. In case it happens, disconnect the plug from the main and plug in again for automatic reset.

Hold the button pushed-in permanent, for increasing or decreasing the capacity of the pump.



Overuse safeguard

The built-in safeguard will switch the pump off in the event of overheating. Remove the plug from the socket and allow the pump to cool down.

The pump must not be switched on after cooling unless it has been checked.

Check the following points:

- Is sufficient water available?
- Is the suction basket blocked?
- Is there dirt in the pump housing (clean as set out in the instructions)?
- Is the suction/pressure hose/pipe blocked for this or other, connected, devices?
- Has the pump cooled down enough?

Once the problem has been resolved, the pump can be switched on again by re-inserting the plug into the socket.



Dismantling: (figure 7)

- Follow the safety instructions.
- **Remove the plug from the socket.**
- Take the suction basket (2 – if present) out of the pump housing (3).
- Remove the screws (12) from the non-return ring (11).
- Take the entire pump (9) and the pump housing (3) out of the shaft (10).
- Remove the pump housing screws (8).
- Take the pump housing (3) off the motor housing (9).

- Take the rotor (5) out of the motor (9).



WARNING: The magnetic field of the rotor (3) is very powerful and it will want to spring back into the motor (9); you could be injured if you do not pay attention!

- Pay attention to the o-ring (4).
- Clean all parts with clean water and a soft sponge.
- Replace broken/damaged parts.



Assembly: (figure 7)

- Put the rotor (5) back into the motor (9).



WARNING: the magnet is very powerful and it will jump back into the motor with some force. You could be injured if you do not pay attention!

- Replace the o-ring (4) and check to ensure this is positioned properly.

- Check to ensure that the rotor (5) can turn around.
- Replace the pump housing (3) on the motor (9) and then secure evenly using the pumping house screws (8).
- Place the motor (9) with the pump housing (3) back into the shaft (10).
- Replace the non-return ring (11) and fix them in place using the screws (12).
- Place the suction basket (2) back on the pump housing (3) if the suction basket (2) is being used.
- Once everything is assembled, the pump can be switched on again.



Maintenance

To ensure a long life and problem-free operation, we recommend that you maintain and clean your pump regularly. Maintenance work can be carried out by anyone with very little effort, see also assembly/dismantling.



Time intervals:

- In the beginning, you can check that the pump is working properly every day. Clean the pump as set out above.
- The regularity with which you clean the pump depends on the extent to which the water is contaminated.

Check during maintenance to see if there has been any wear and tear or if parts are worn or damaged. Replace any parts that are worn or damaged. Check the list of replacement parts for this purpose. **Important: If you have hard water in your area, it is useful to regularly clean the rotor (5) and the interior of the motor (9).**

Parts list: (figure 7)

Provide the drawing number, the description and the pump type when ordering.

No.	Description	No.	Description
1	Logo plate	10	Foot
2	Suction basket	11	Non-return ring
3	Pump housing	12	Screws
4	O-ring	13	VarioFlowControl panel
5	Rotor	14	Hose fitting seal
6	Bearing	15	Hose fitting
7	Bearing holder	16	Nut
8	Pump housing screws	17	Adhesive connection seal
9	Motor	18	Adhesive connection

Parts that can be ordered from your dealer.



Winter period

- Protect the pump against freezing during winter; if necessary, pump the water out of the system or remove the pump from the water.
- Clean the pump as described earlier, before putting it in storage.
- Place the pump in a water container at a frost-free location to prevent the rubber seals from drying out.



Removal and storage of waste

All household electrical appliances must be disposed of in accordance with EU directives. The product may not be disposed of with the normal household waste, but should be collected separately. You are personally responsible for bringing the device to a designated landfill site. It must be dismantled and processed in an environmentally-friendly manner.

More information on local landfill sites can be obtained from the municipality in which you live.



Warranty conditions

The pump is covered by a 36-month warranty from the date of purchase. Please keep the receipt for future reference.

Within the period specified, repair or replacement of damage caused as a result of manufacturing and/or material defect will be free of charge. Rotor, normal wear and tear, dry running, operating errors, scale, lack of maintenance, freezing, improper repairs and damage caused by improper use are not covered by the warranty.

Any modification or alteration of the pump, such as shortening the power cord or cutting the plug off, will render the warranty null and void.

The supplier is not liable for consequential damage arising from pump failure or misuse.

For warranty claims, take the product, the product warranty and receipt to the retailer.

Aankoopdatum – Date d'achat – Kaufdatum – Date of purchase:

Dealerstempel – Cachet du revendeur – Stempel des Händlers – Stamp of dealer:

Handtekening – Signature – Unterschrift – Signature:

Vergeet niet uw aankoopbon te bewaren samen met dit garantiebewijs.
Ne pas oublier de garder votre facture d'achat avec ce certificat de garantie ensemble.
Vergessen Sie nicht, Ihren Kaufbeleg mit diesem Garantieschein zusammen zu halten.
Don't forget to keep your purchase invoice with this guarantee certificate together.



No: 9726008 - 03/2016

Auga – Hengelo G - NL

www.auga.nl