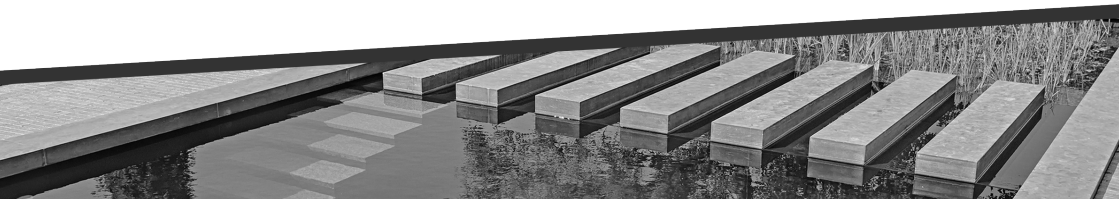


**MANUAL** English • Nederlands • Deutsch • Français

# UV FOUNTAIN PUMP

---

GFU-5800



## INTRODUCTION

Congratulations on your purchase. Failure to follow the instructions and warnings may lead to damage and/or personal injury. Please read this manual carefully and keep it for future reference.

This appliance is not intended to be used by persons (including children) with reduced physical, sensory or mental capabilities, or lack of experience and/or knowledge, unless they are supervised or have been given instructions on how to use the appliance by a person responsible for their safety. Children must be supervised to ensure that they do not play with the appliance.

## FUNCTION

- With this well-designed and compact product, you can filter, purify and pump water, build up a culture of biochemically active bacteria and perform other functions.
- Large filter surface, matching water flow line with stylish effect
- Built-in separate filter media holder that allows easy changing and addition of biochemical filter material.
- Filter material (No. 11, 12 and 13 of the exploded view) is available separately. It can be stacked to extend the maintenance cycle.
- Suitable for ponds.

## SAFETY RULES

The products of the GFU series are a combination of fountain pump, filter and UV-C lamp. Damage to the device or incorrect operation can cause dangerous radiation on the skin and in the eyes. If the device is damaged, it should not be used. This appliance is not intended for use by persons (including children) with reduced physical or mental capabilities, or lack of experience and knowledge, unless they have been given supervision and/or instruction concerning use of the appliance by a person responsible for their safety. The appliance must be kept out of the reach of children.

- This device must be placed under water. Make sure that the device is completely submerged in the water and that the depth does not exceed 2 metres.
- If there is not enough water to submerge the unit completely, never connect it to the power supply; this prevents dry-running (operation without water) and damage to the unit.
- As the UVC lamp is made of sensitive quartz glass, drops or bumps must be avoided.
- The appliance can only be plugged in once all components have been fully installed.
- If the power cord, the UVC lamp or the housing is damaged, the device cannot be used.
- Check that the voltage and frequency of your power supply correspond to the specifications on the device's rating plate.
- When installing the device, the installation regulations for pond pumps must also be observed.
- The unit must be earthed. Earthing must be checked by a qualified electrician. In order to ensure safety we also recommend installing a leak protection.
- Do not pull on the power cable to disconnect the device from the power supply. Also keep the cable away from heat, oil or sharp edges.

- If the pump makes unusual noises, disconnect it from the mains and investigate the cause.
- Remove the UVC filter in the event of frost to prevent frost damage.
- Contamination of the quartz glass tube affects the function of the unit; clean the quartz glass tube promptly and regularly.
- If the housing becomes clogged with sand and other dirt, the quartz glass tube and the water pump can be damaged. Therefore, insert the filter sponge in the water inlet. The sponge should be cleaned regularly (once a month).
- UVC radiation is harmful to the eyes and skin. Do not look directly into the lamp and do not let your skin come into contact with the radiation.
- Always unplug this equipment before installing or repairing it.

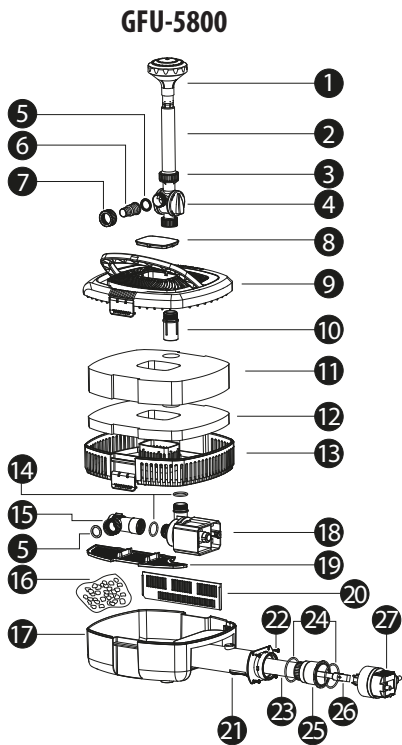
## NOTES

- The device contains a built-in filter sponge, a holder for filter media, a UV-C lamp and a water pump. It has a matching water flow that makes it suitable for indoor and outdoor use, for garden ponds, fish breeding ponds, for water purification and for water fountains.
- The UVC lamp is designed as a closed device, so no UVC radiation is emitted. The UVC radiation has a wavelength of 253.7 nm and kills harmful bacteria and algae, thus making the water clean.

## TECHNICAL SPECIFICATIONS

MODEL	Voltage (V) and frequency (Hz)	Power (W)	UV-C power (W)	Max. suction head (m)	Max. flow (ℓ/h)	Connections (mm)
GFU-5800	220–240/50	55	11	4,8	5200	25/32 (3/4"/1")

# PARTS LIST



1	Nozzle	10	Connection thread	19	Partition 1
2	Flexible tube	11	Coarse sponge	20	Partition 2
3	Nut	12	Fine sponge	21	UV light shell body
4	T-joint	13	Middle filter cover	22	Screw
5	Gasket	14	O-ring 1	23	Quartz glass tube
6	Outlet	15	Curved joint	24	O-ring 2
7	Outlet nut	16	Filter material	25	Quartz glass tube sleeve
8	UV observation window	17	Lower filter cover	26	UV lamp
9	Upper filter cover	18	Motor	27	UV-C device head with cable

# ASSEMBLY AND MAINTENANCE

---

Turn off the power supply when cleaning the inside of the unit or changing the UVC lamp. Please observe the following parts list as a reference.

## Mounting

After assembling the components of the fountain as shown in the exploded view, adjust the extension pipe to the correct height and submerge the unit in water. If the pump is to carry clean water, remove the fountain assembly and attach the water discharge pipe for use.

## Maintenance

- Filter sponge and filter material:
  1. Remove the parts of the fountain and open the two clips on the side of the filter cover; you can then open the filter cover.
  2. Remove, clean or replace the filter sponge and filter material (weekly cleaning of the filter sponge is recommended).
- UV-C lamp
  1. Open the pump and remove the UVC lamp. Open the safety latch and turn the lamp head anti-clockwise to remove the quartz glass tube. Now the UVC-lamp can be replaced.
  2. To clean the quartz glass tube, remove the fixing nut and take the tube out for cleaning.
- Water pump:
  1. Turn the impeller cover anticlockwise until it clicks into place, open it outwards to separate the impeller cover from the pump housing.
  2. Remove the rotor and clean all parts with the small brush.

# PREPARE FOR WINTER

---

1. Take the device out of the water.
2. Clean the device thoroughly.
3. Check the components and the condition of the unit.
4. Store the unit in a container filled with clean water in a frost-free place.

# SPARE PARTS FOR REPLACEMENT

---

1. UVC lamp
2. Filter material (bio balls, gravel, filter sponge)

## TROUBLESHOOTING

Problem	Possible cause	Solution
Water pump does not work	No power	Connecting to the mains
	Burned out	Replace pump
	Blocking of the impeller	Remove blockages
The water pump makes a lot of noise	Blocking of the impeller	Remove blockages
	Wear of the rotor or the shaft	Replace rotor or shaft
Water shortage of the water pump	Defective impeller or closed water supply valve	Replace the impeller or open the water supply valve
	Appliance inlet or water pump inlet blocked	Remove blockages
	Lower voltage than required	Use an appropriate voltage
UVC lamp does not work	No power	Connecting to the mains
	Faulty UVC lamp	Replace the UVC lamp
	Poor connection of the UVC lamp	Replace the UVC lamp

## DISPOSAL REGULATIONS

The EU Directive on Disposal of Waste Electrical and Electronic Equipment (WEEE, 2012/19/EU) was implemented by the Electric and Electronic Equipment Act.



Disposal of used electrical and electronic equipment (for use in countries of the European Union and other European countries with separate collection systems for this equipment). The symbol on the product or on its packaging indicates that this product should not be treated as normal household waste but taken to a collection point for the recycling of electrical and electronic equipment.

By contributing to the proper disposal of this product, you will protect the environment and health of your fellow men. The environment and health are endangered by improper disposal. Material recycling helps to reduce the consumption of raw materials.

For more information on the recycling of this product, please contact your local city office, your local waste disposal authority or the shop where you purchased the product.