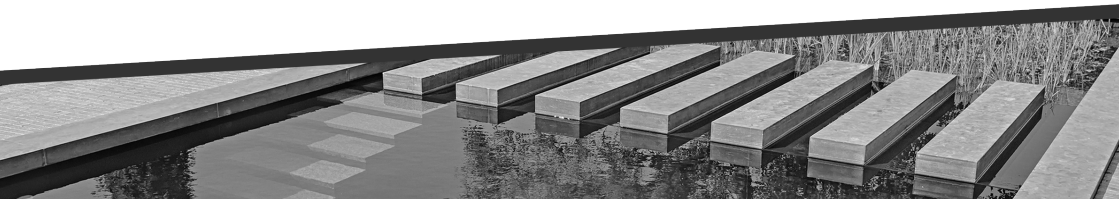


MANUAL English • Nederlands • Deutsch • Français

UV FOUNTAIN PUMP

GFU2505 | GFU5005 | GFU5000 | GFU6011



INTRODUCTION

Congratulations on your purchase. Once your filter is installed, you can enjoy clear water for years to come. AquaForte filters are carefully tested for safety and use. However, failure to follow the instructions and warnings may lead to damage and / or personal injury. Read this manual carefully and keep it for future reference.

SAFETY RULES

On stagnant water, garden ponds and swimming ponds, as well as in their vicinity, operation of the unit is only permissible with a residual current device with a tripping current of up to 30 mA (according to VDE 0100 parts 702 and 738).

This appliance is not intended for use by persons (including children) with reduced physical, sensory or mental capabilities, or lack of experience and/or knowledge, unless they have been given supervision or instruction concerning use of the appliance by a person responsible for their safety. Children must be supervised to ensure that they do not play with the appliance.

- Before putting the filter into operation, carry out a visual check. Do not put the filter into operation if it is damaged.
- The filter is to be used only for the purposes specified in these operating instructions.
- You are responsible for safety in the work area
- If the cable or plug is damaged due to external influences, the cable must not be repaired but replaced with a new one. This work may only be carried out by a qualified electrician.
- The voltage of 230VAC specified on the unit type plate must correspond to the existing mains voltage.
- Never lift, carry or fasten the device by its power cable.
- Make sure that the electrical plug connections are located in the flood-proof room or are protected from moisture.
- Always pull out the mains plug before working on the unit.
- The user is responsible for compliance with the locally applicable safety and installation regulations. If necessary, consult an electrical engineering specialist.
- The user should take appropriate measures (e.g. installation of an alarm system, stand-by pump, etc.) to prevent consequential damage caused by flooding of rooms in the event of a malfunction of the appliance.
- In the event of a defect in the device, repair work may only be carried out by a qualified electrician.
- The unit must never run dry or be operated with the suction pipe completely closed. The manufacturer's guarantee becomes null and void if damage to the unit is caused by dry running.
- The unit must not be used for filtering swimming pools.
- The unit must not be installed in the drinking water circuit.
- UVC radiation is harmful to the eyes and skin. Do not look directly into the lamp and do not let your skin come in contact with the radiation.
- Use the UV lamp only in its closed, unbroken housing.

Read all safety information and instructions. Failure to observe the safety information and instructions may result in electric shock, fire and/or serious injury. Keep all safety information and instructions for future reference.

Applications

- The temperature of the pumped liquid must not exceed +35 °C in continuous operation.
- This pump must not be used for pumping flammable, gaseous or explosive liquids. This pump must not be used for other liquids, particularly motor fuels, cleaning agents and other chemical products!

Electrical connection

The electrical connection takes place at an earthed socket 230V ~ Hz50. Minimum fuse A10. The appliance is turned on and off with an on/off switch.

The GFU series contains a UV-C lamp with an integrated pump. These devices must not be used if they are damaged or open. The UV rays can cause damage to the skin and eyes.

- The unit must be placed under water. Make sure that the unit is completely submerged. Maximum depth is 2 metres.
- Do not switch on the appliance before it is in the water. Damage may occur if the appliance is operated without water.
- Make sure that the device stands on a firm surface and cannot tip over or be knocked over. Severe shocks can cause damage to the quartz glass tube it contains.
- Only use the device if there is no visible damage to the cable or the device itself.
- The device must not be used when there are persons in the water.
- The maximum pressure that may be exerted on the device is 2 bar .

APPLICATION

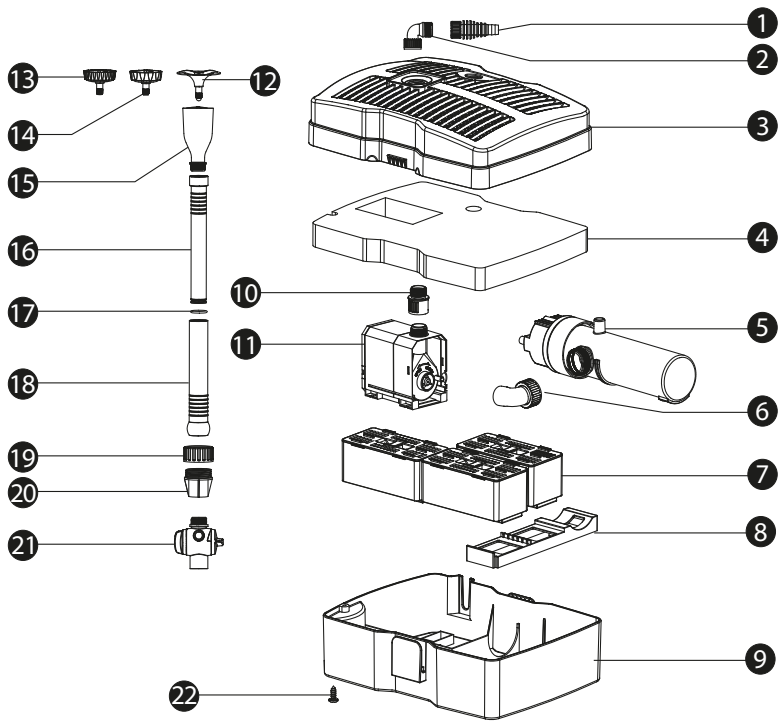
This UVC unit ensures healthy fish and clear water. The water is pumped through the UVC unit by a pump. There it flows past a UV lamp and is exposed to UVC radiation, which destroys the bacteria, pathogens and floating algae in the water. The water thus becomes clear.

TECHNICAL SPECIFICATIONS

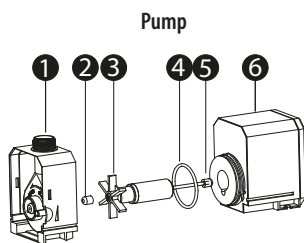
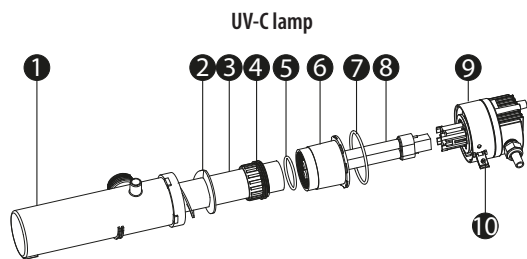
MODEL	Power supply	Power (W)	UV-C-Lamp (W)	Max. height (m)	Max. Flow (ℓ/h)	Connection (mm)
GFU-2505	230 V/50 Hz	24	5	1,6	1000	13 / 19 / 25 (½" / ¾" / 1")
GFU-5005	230 V/50 Hz	38	5	2,0	2000	13 / 19 / 25 (½" / ¾" / 1")
GFU-5000	230 V/50 Hz	42	9	2,0	2000	13 / 19 / 25 (½" / ¾" / 1")
GFU-6011	230 V/50 Hz	57	11	2,5	2500	13 / 19 / 25 (½" / ¾" / 1")

PARTS LIST

GFU-2505/5005/5000/6011



1	Outlet	8	Filter base	17	O-ring
2	Elbow pipe 1	10	Adapter	18	Connection pipe
3	Filter cover	11	Pump	19	Nut
4	Sponge	12	Fountain head 1	20	Flange
5	UV-C lamp	13	Fountain head 2	21	Tee adjuster
6	Elbow pipe 2	14	Fountain head 3	22	Screw
7	Filter material boxes	15	Fountain sets base		
8	Runner plate	16	Extension pipe		



1	UV light shell body	6	Quartz glass tube sleeve
2	Spiral sleeve	7	60×3.1 O-ring
3	Quartz glass tube	8	UV-C lamp
4	Fixing nut	9	UV-C device head with cable
5	45×4 O-ring	10	Safety buckle

1	Impeller cover
2	Rubber bearing
3	Rotor
4	O-ring
5	Shaft
6	Motor

USE

1. The device is intended for use under water. Make sure that it is completely submerged. Place the device up to 2 metres below the surface of the water.
2. The unit must not be operated when the water is not deep enough to submerge it completely. This may cause irreparable dry running damage.
3. Parts of the UV lamp are made of glass; therefore, be careful not to drop or hit it hard. There is a risk of breakage.
4. Install all components completely before plugging them in.
5. The appliance must not be used if the appliance, the power cable or the lamp are damaged. Check thoroughly before use.
6. Never use the appliance without the filter sponge. The filter sponge should be cleaned regularly; we recommend cleaning it at least once a month. If the unit is operated without filter sponge, the pump and UV unit can be damaged by small particles such as sand and pebbles.

INSTALLATION AND CLEANING

1. When cleaning or servicing the appliance, unplug it from the wall socket.

Installation

1. Connect the parts 15, 16, 17, 20 and 21, choose the desired fountain attachment and connect the whole with part 15.
2. Push the riser tube together to the desired size and place the unit in the water.
3. The fountain is optional and does not need to be installed if, for example, you only want to circulate the water.

Cleaning and maintenance

1. Dismantle the fountain part, loosen screw 22 and open the two clips on the side of the unit. You can now remove the filter cover.
2. Remove the filter sponge and the filter boxes and clean them or replace them as necessary. The sponge must be cleaned regularly.

UVlamp

1. Remove the UV lamp and release the safety lever. Turn the cylinder counter-clockwise as far as it will go. Now you can pull out the lamp and replace the UV lamp.
2. To clean the quartz tube, loosen the screw ring 4 and pull the tube out of the connector.

Pump

1. Turn the pump cover counter-clockwise as far as it will go. Now you can pull the housing parts apart.
2. Pull the pump shaft out of the housing and clean it thoroughly with a soft brush and clean water.

WINTERISING

1. Take the device out of the pond.
2. Clean all parts thoroughly.
3. Check all parts for damage.
4. Store the unit in a frost-free place in a container filled with water.

DISPOSAL REGULATIONS

The EU Directive on Disposal of Waste Electrical and Electronic Equipment (WEEE, 2012/19/EU) was implemented by the Electric and Electronic Equipment Act.



Disposal of used electrical and electronic equipment (to be used in the countries of the European Union and other European countries with separate collection systems for this equipment) The symbol on the product or packaging indicates that this product should not be treated as normal household waste but taken to a collection point for the recycling of electrical and electronic equipment.

By contributing to the proper disposal of this product, you will protect the environment and health of your fellow men. The environment and health are endangered by improper disposal. Material recycling helps to reduce the consumption of raw materials.

For more information on the recycling of this product, please contact your local city office, your local waste disposal authority or the shop where you purchased the product.